

File No. 18-/2017-RMSA-I
Government of India
Ministry of Human Resources Development
Department of SE&L
RMSA.1

Shastri Bhawan, New Delhi
Dated: 17th April, 2017

To,

Shri Naresh pal Gangwar
Secretary (SE),
Government of Rajasthan,
Jaipur (Rajasthan)

Subject:- Minutes of the Meeting of Project Approval Board (PAB) held in 17th February, 2017 for approval of Annual Work Plan & Budget 2017-18 for the State of Rajasthan under Centrally Sponsored Scheme of the Integrated Rashtriya Madhyamik Shiksha Abhiyan (RMSA).

Sir,

Please find enclose herewith minutes of the Meeting of project Approval Board (PAB) held on 17th February, 2017 for approval of Annual Work Plan & Budget 2017-18 for the State of Rajasthan under centrally Sponsored Scheme of the Integrated Rashtriya Madhyamik Shiksha Abhiyan (RMSA) for information and necessary action.

Yours sincerely,

(Rajesh Kumar Maurya)

Under Secretary to the Government of India

Encl : As above

Copy to:

1. PPS to Secretary (SE&L)
2. PS to AS (SE)
3. PPS to JS (SE.1)
4. PPS to JS&FA(MHRD)
5. State Project Director, RMSA, Govt of Rajasthan
6. Vice Chancellor, NUEPA
7. Vice Chancellor, IGNOU
8. Director, NCERT
9. Dr. Punam Srivastava, Dy. Adviser, NITI Aayog, New Delhi
10. All Consultants, TSG-RMSA

F. No. 18-1/2017-RMSA-1
Government of India
Ministry of Human Resource Development
Department of School Education and Literacy

Minutes of the Meeting held on 17th February, 2017 for approval of Annual Work Plan & Budget 2017-18 of Rajasthan under the Centrally Sponsored Scheme of the Integrated Rashtriya Madhyamik Shiksha Abhiyan (RMSA).

The Project Approval Board (PAB) meeting to consider the Annual Work Plan & Budget (AWP&B) of RMSA for the year 2017-18 in respect of the State of Rajasthan was held on 17th February, 2017

2. The list of participants who attended the meeting is at **Annexure-I**.

3. Joint Secretary (SE-1) welcomed the participants. He highlighted the overall status of secondary education in the State, areas of concern and details of the proposal of Annual Work Plan & Budget (AWP&B) for RMSA for 2017-18. A copy of Presentation is at **Annexure-II**.

Discussions were held on the educational indicators, as follows:

Education Indicators:-

- The enrolment 23,48,722 (2016-17) has increased by 17,483 (0.75%) from previous year i.e. 23,31,239 (2015-16).
- The Gross Enrolment Ratio (GER) at Secondary level has increased from 76.06% (2015-16 Flash Statistics) to 78.45% (2016-17).
- The Net Enrolment Ratio (NER) at State level has increased from 41.14% (2015-16 Flash Statistics) to 42.19% in the year 2016-17.
- The drop-out rate at State level has increased from 3.28% (2015-16) to 3.52% (2016-17).
- The Retention Rate at State level has increased from 96.72% (2015-16) to 97.84% (2016-17)
- The Gender Parity Index (GPI) at State level has increased from 0.86 (2015-16) to 0.90 (2016-17).
- The Gender Gap at State level has decreased from 15 (2015-16) to 13 in the year 2016-17. However, it is still very high as compared to the National Average.
- The Pupil teacher ratio (PTR) at State level has increased from 21 (2015-16) to 22 in 2016-17.
- The Student Classroom Ratio (SCR) at State level has increased from 41 (2015-16) to 43 (2016-17).



Issues related to Educational Indicators:

- Though the overall **Gender Gap** has slightly reduced in 2016-17 from last year, State Government needs to make consistent efforts to reduce the gender gap which is still high at 13.
- **Low GER & GPI, and high Gender Gap** in the districts of Jaisalmer, Jalore and Barmer is an area of concern and the State Government was asked to undertake special drives to address the issues of these districts. Secretary Education stated that the main problem in these districts is of access and hence requested for approval of new schools so that the gaps in access can be reduced. It was decided that as a special case, new schools may be allowed to the state this year also and hence 33 one -section new schools were approved as per the priority given by the state out of the eligible schools.

Other Issues:

- Out of 186 **Girls Hostels** approved, construction is complete in respect of 174 Hostels, but the enrolment in the girls' hostels is low. The Secretary Education, Rajasthan informed that the construction is going on and is in final stage of completion in respect of other 12 Hostels and that all the hostels would be made functional by June 2017. Further, State also informed that the capacity of hostels has now been enhanced to 100 beds in each hostel and hence the enrolment is likely to improve.
- It is observed that **ICT in school** component is still to be implemented in 303 schools out of 7428 schools approved so far and the State Government was asked to implement ICT in these 303 schools also at the earliest.
- Though all 670 schools approved for **Vocational Education** are functional in the State of Rajasthan, Tools & equipment for 380 schools are still to be procured and the State Government is asked to take action in this regard on priority basis.
- It is observed that **Aadhar enrolment** of 33.4% students has only been reported to NUEPA so far by the State. The State representative informed that they have completed Aadhar enrolment of 83.73% of student and will be completing for all the students by 31st March, 2017 and final data will be submitted to NUEPA immediately thereafter.
- 84 Government secondary schools in the State are still to be **electrified**. The State Government was asked to ensure 100% electrification of Government secondary schools on priority.
- Since the State has done convergence of schools, hence they need to provide the correct data for GIS Mapping after removing those schools which have been converged.



4. Annual Work Plan and Budget for 2017-18:

S. No.	Activities
A	Non-recurring
A1	RMSA
1	New Schools: 33 New one-section schools were approved with a total outlay of Rs. 1512.72 lakh (list of schools at Annexure IV).
2	Strengthening of Existing Schools: 100 schools were approved under strengthening component of RMSA with total outlay of Rs. 3624.10 lakh. (list of schools at Annexure-IV). The component-wise approval under Strengthening is as under:
2.1	11 Additional Class Rooms (ACRs) were approved @ Rs. 10.05 lakh per ACR with total outlay of Rs 110.55 lakh.
2.2	100 Art /Craft Rooms were approved @ Rs. 9.55 lakh per Art/Craft Room with total outlay of Rs. 955 lakh.
2.3	Science Lab in 97 schools was approved @Rs. 10.55 lakh per Science Lab with total outlay of Rs. 1023.35 lakh.
2.4	Lab Equipments for 97 schools were approved @ Rs. 1 lakh per Lab with total outlay of Rs. 97 lakh.
2.5	Library Rooms for 94 schools were approved @Rs. 31.2 Lakh per Library Room with a total outlay of Rs. 1240.8 lakh.
2.6	141 Toilet Blocks for CWSN were approved @ 1.4 lakh per toilet block with a total outlay of Rs. 197.4 lakh.
B	Recurring Grant
B1	RMSA
1.1	Staff for schools:
1.1.1	Sanctioned in previous years' New Schools: 12 months' salary for 136 Head Masters in position was approved (as per UDISE) @ Rs 50,820/- per month with a total outlay of Rs. 829.38 lakh 12 months' salary for 567 teachers' in-position (as per UDISE) was approved @ Rs 32,670/- per month with a total outlay of Rs. 2222.86 lakh.
1.1.2	Additional Teachers: After detailed discussion and due to rationalisation of sanctioned posts in the State, support for salaries for 6654 Additional Teachers was approved @ Rs. 32,670/- per month for 12 months with a total outlay of Rs. 26086.34 lakh subject to verification of documents provided by the State regarding their appointment, subjects taught and posting to the schools having low PTR alongwith detail of vacancies of teachers in the state cadre.
1.2	School Grant: for 14,056 schools @ Rs. 50,000/- was approved as proposed by the State Government with total outlay of Rs. 7028 Lakh.
1.3	Training of Teachers/HMs & Other members :
1.3.1	In-service Training of Teachers: In-service training of 5,800 subject teachers (SST, Languages, Computer and Sports) was approved @ Rs. 300/- per day per teacher for 10 days with a total outlay of Rs. 174 lakh.
1.3.2	School Leadership Management Course (Residential): School Leadership Management Course to 3,000 HMs (as agreed by NUEPA) was approved @ Rs. 300/- per day for 16 days with a total outlay of Rs. 144 lakh.
1.3.3	Training for Educational Officers (DEO's/ Principals /Administrators): training of 50 Educational Officers @ 300/- per day for 3 days

S. No.	Activities
	was approved with a total outlay of Rs. 45,000.
1.3.4	Training of Master Trainers: training of 462 MRPs (SST, Language, Maths and Science) @ Rs. 300/- per teacher for 5 days was approved with a total outlay of Rs. 6.93 lakh.
1.3.5	Training of SRGs (SLDP): training of 250 SRGs @ Rs. 300/- per person (as per NUEPA proposal) for 10 days was approved with total outlay of Rs. 7.50 lakh.
1.4	Community Mobilisation: SMDC training: SMDC training of 1620 Members (@ 15 members per school for 108 schools) for 2 days @ Rs. 300/- per day per person was approved with total outlay of Rs. 9.72 Lakh.
1.5	Quality Components :
1.5.1	STEM project (Education improvement using technology and innovation): training of 30 Key Resource Persons (@ Rs. 1,500/KRP) with outlay of Rs. 45,000, Core Team Orientation Workshop (@ Rs. 300/person for 35 persons for 1 day) with outlay of Rs. 10,500/- and Learning Continuum Workshop for mapping concepts, resource (@ Rs. 300/person for 30 participants for 1 day) with outlay of Rs. 9000/- was approved. Total outlay approved for STEM Project is Rs. 64,500/-
1.5.2	Continuous professional development for teachers: was approved @Rs 50,000 for holding State level science workshop, as proposed by State Government. Development of 33 District Resource Groups/Subject Experts to work with DIETs and other key State level institutes to provide support to teachers @ Rs. 3000 per Group for 10 days with total outlay of Rs. 99,000/- was also approved. Total approval for continuous professional development for teachers is Rs. 1.49 lakh
1.5.3	Shaala Siddhi : implementation of Shaala Siddhi in 14056 schools @ Rs. 600/- per school with total outlay of Rs. 84.34 lakh was approved with the request to the State to cover all govt. and aided schools also.
1.6	Project-Rashtriya Avishkar Abhiyan (RAA):
1.6.1	Excursion Trips for Students within State: excursion trip for 3,300 students (@ 100 students per district for 33 districts) @ Rs. 200/- per person with total outlay of Rs. 6.60 lakh was approved.
1.6.2	Exposure Visit Outside State: PAB approved 250 students @ Rs. 2000/student for Excursion visit with a total outlay of Rs. 5 lakh.
1.6.3	In-service training of Science & Maths Teachers: for 3000 (1500 Science + 1500 Maths) teachers as per UDISE @ Rs. 3000/teacher on NCERT modules with total outlay of Rs. 90 lakh was approved.
1.6.4	Learning Enhancement (Remedial Teaching): was approved for 1,37,962 students (20% of total enrolment in class IX as per U DISE 2016-17)@ Rs. 500/- per student with total outlay of Rs. 689.81 lakh.
1.6.5	Maths Kit: 1 Maths Kit each to 165 schools @Rs. 1,100/- per kit with an outlay of Rs. 1.815 lakh was approved.
1.6.6	Science Exhibition / Book Fair: PAB approved Science Exhibition/ Book Fair for 33 districts @ Rs. 1 Lakh per district with total outlay of Rs. 33 lakh.
1.7	Project on English
1.7.1	In-service training of 1047 English Teachers (as per UDISE) @ Rs. 900/- per teacher with an outlay of Rs. 9.42 lakh was approved.
1.7.2	KRP/RP/ Training: Training of 33 KRPs (@ 1 KRP per district) @ Rs. 300/KRP

S. No.	Activities
	for 5 days with a total outlay of Rs. 49,500 was approved.
1.8	Project Kala Utsav: Rs 10 lakh for conduct of events at State/district level under Kala Utsav and TA/DA @ Rs. 2,000/- per participant for 50 participants at national level event with outlay of Rs. 1 lakh. Total approval for Project Kala Utsav is Rs. 11 lakh.
1.9	Project Sports Tournament: Sports event for 33 districts @ Rs. 50,000/- per district and Rs. 1 lakh conduct of State level Sports tournament was approved. Total approval under the Project Sports Tournament is Rs. 17.50 lakh
1.10	Project- Girls Empowerment
1.10.1	Special Enrolment Drive: special enrolment drive for 3548 schools (in 9 districts with low GER of girls) @ Rs. 1,800/- per school with a total outlay of Rs. 63.86 lakh was approved.
1.10.2	Self-defence training: 2100 schools @ Rs. 3,000/- per month for 1 month with a total cost of Rs. 63 lakh was approved.
	Project IT/e-Governance
	Shaala Darpan: 3097 tablets for Adarsh Vidayalyas @ 1 tablet per school @ Rs. 6,000/- per tablet with total outlay of Rs. 185.82 lakh was approved. The state may also take into consideration the national model being developed for the purpose so that there can be sharing of data.
B2	ICT @ School
2.1	The proposal of actual expenditure incurred by State Government towards Salary of 2000 computer Teachers with total outlay of Rs. 2140 lakh was approved on reimbursement basis subject to submission of requisite documents. The following is the breakup:
	Other Recurring activities under ICT:
2.2.1	the actual expenditure on Computer stationary (Printer, Cartridge, CD-ROMs, DVD, Paper etc.) to 2,525 schools with total outlay of Rs. 1301.01 lakh on reimbursement basis.
2.2.2	The actual expenditure on Electric charges to 2525 schools with total outlay of Rs. 297.95 lakh on reimbursement basis.
2.2.3	The actual Expenses on Diesel/Kerosene for Generator for 2525 schools with total outlay of Rs. 179.28 lakh on reimbursement basis.
2.2.4	Actual expenditure on Internet/Broad band charges for 2525 schools with total outlay of Rs. 171.70 lakh on reimbursement basis.
2.2.5	Expenditure on Telephone Charges for 2525 schools with a total outlay of Rs. 151.50 lakh on reimbursement basis.
B3	Girls Hostel (GH) Recurring grants on anticipated functional status of Hostels was approved and actual release of funds is subject to State Government confirming of making these Hostels functional with enrolment details. The following is detailed break-up:
3.1	Food/Lodging expenditure for Girl Child: Food/Lodging for expected enrolment of 12451 Girls @ Rs. 1,500/- per month per girl for 10 months with a total outlay of Rs. 1867.65 lakh.
3.2	Head Cook: financial support to 1 Head Cook per Hostel @ Rs. 3,000/- per month per person for 12 months for 186 Hostels with a total outlay of Rs. 66.96 Lakh.
3.3	Assistant Cooks: financial support to 2 Assistant Cooks per Hostel for 186 Hostels @ Rs. 2,500/- per month per person for 12 months with a total outlay of

S. No.	Activities
	Rs. 111.60 lakh.
3.4	Honorarium of Warden: honorarium for 1 Warden per Hostel @ Rs. 5,000/- per month per person for 12 months for 186 Hostels with total outlay of Rs. 111.60 Lakh.
3.5	Chowkidar: financial support for 1 Chowkidar per hostel for 186 Hostels @ Rs. 3,000/- per month per person for 12 months with a total outlay of Rs. 66.96 Lakh.
3.6	Electricity/Water: Electricity/Water @ Rs. 60,000/- per annum per hostel for 186 hostels with a total outlay of Rs. 111.60 Lakh to be spent on pro rata basis from when these hostels become functional..
3.7	Maintenance: for 186 hostels @ Rs. 40,000/- per annum with a total outlay of Rs 74.40 lakh to be spent on pro rata basis from when these hostels become functional..
3.8	Medical care: - medical facilities for expected 12451 girls @ Rs. 750/- per annum with a total outlay of Rs 93.38 lakh.
3.9	Miscellaneous: - Miscellaneous @ Rs. 40,000/annum per Hostel for 186 hostels with total outlay of Rs 74.40 lakh to be spent on pro rata basis from when these hostels become functional.
3.10	Newspaper/Magazines & Sports: @ Rs. 2,000/- per month for 10 months per Hostel to 186 hostels with a total outlay of Rs. 37.20 Lakh.
3.11	Toiletries and sanitation: Toiletries and sanitation facilities for 12451 girls @ Rs. 100/- per month for 10 months with a total outlay of Rs 124.51 lakh.
B4	IEDSS
4.1	Recurring activities under IEDSS: An outlay of Rs. 730.19 lakh for IEDSS activities including salary for 121 special educators was approved.
4.1.1	Environment Building Programme: was approved for 295 blocks @ Rs. 10,000 per Block with total outlay of Rs. 29.50 lakh.
4.1.2	In-Service Training of 121 in position Special Educators @ Rs. 300 per day for 10 days with total outlay 3.63 lakh was approved.
4.1.3	Orientation of Principals, Educational Administrators, Parents/Guardians for 2145 persons @ Rs. 300/- per person with total outlay of 6.44 lakh was approved.
4.1.4	Financial support for salary of previously approved 121 Special Educators was approved @ Rs. 33,070/- per month (including special pay of Rs. 400/-) for 12 months with total outlay of Rs. 480.18 lakh.
4.2	Student oriented activities Rs. 210.45 Lakh for CWSN students' oriented activities was approved.
4.2.2	Assistive devices, equipment and Teaching Learning Material for 200 students @ Rs. 900/- per student with total outlay of Rs. 1.80 lakh was approved.
4.2.3	Book and Stationary for 200 students @ Rs. 6,500/- per student with a total outlay of Rs. 13 lakh approved.
4.2.4	Escort Allowance for 460 escorts @ 2,500/- per person with total outlay of Rs 11.50 lakh approved.
4.2.5	Identification and assessment (Medical Assessment Camps) for 33 blocks @ 45,000/- per block with a total outlay of Rs. 14.85 lakh
4.2.6	Aids & Appliances for 1400 students @ Rs. 6,000/- per student with a total outlay of Rs 84 lakh.
4.2.7	Reader Allowance was approved for 200 students @ Rs. 1,500/- per student with total outlay of Rs. 3 lakh.



S. No.	Activities
4.2.8	Stipend for 3040 CWSN girls @ 200/- per girl for 10 months with a total outlay of Rs. 60.80 lakh was approved.
4.2.9	Transportation Allowance for 1,000/- students @ 2,150/- per student with total outlay of Rs 21.50 lakh was approved.
B5	Vocational Education (VE)
	Non Recurring:
5.1	Tools, Equipment & Furniture: tools, equipment and furniture for 50 schools @ Rs. 7 lakh with a total outlay of Rs. 350 lakh was approved. (list of 50 schools is at Annexure-VI)
	Recurring:
5.1.1	Assessment and Certification Cost for 670 previously approved schools @ Rs. 81,500/- per school was approved with a total outlay of Rs. 546.05 Lakh.
5.1.2	Cost of providing Hands on training for 720 schools (670 previously approved schools @ Rs. 38,000/- per school and 50 newly approved schools @ Rs. 37,500/- per school) was approved with a total outlay of Rs. 273.35 lakh respectively.
5.1.3	Flexible pool for engaging Resource Person for 720 schools (670 previously approved schools and 50 newly approved schools) @ Rs. 7.25 Lakh per school was approved with total outlay of Rs. 5220 lakh.
5.1.4	Raw material cost for 720 schools (670 previously approved schools and 50 newly approved schools) @ Rs. 70,000/- per school with a total outlay of Rs. 504 lakh was approved.
5.1.5	Office expenses/contingencies was approved for 720 schools (670 previously approved schools and 50 newly approved schools) @ Rs. 1 lakh per school with total outlay of Rs. 720 lakh.
5.2	Training under Vocational Education
5.2.1	1 week In-service training for teachers for 1340 teachers @ Rs. 3,000/- per person was approved with total outlay of Rs. 40.20 Lakh.
5.2.2	4 week induction training for 100 new trainers @ Rs. 11,000/- per person with a total outlay of Rs. 11 Lakh was approved.
C	MMER
1	MMER was approved @ 3.5% of the outlay with financial implication of Rs. 2040.02 lakh.

5. The cost sheet indicating the component wise proposal of the State and approval of PAB under RMSA is at Annexure-III.

6. The Status of financial details of new approvals for recurring and non-recurring nature against the proposals of the State is summarized in the following table:

(Rs. in lakh)

Components	Fresh Outlay for 2017-18			Spill over	Grand Total
	Non Recurring	Recurring	Total		
RMSA (including MMER)	5136.82	39813.01	44949.83	22882.58	67832.41
ICT	0	4241.43	4241.43	32894.92	37136.35
IEDSS	0	730.19	730.19	0	730.19
VE	350.00	7314.60	7664.60	2560.08	10224.68
GH	0	2740.26	2740.26	2476.64	5216.90
Total	5486.82	54839.49	60326.31	60814.22	121140.53

7. The release of funds to different schemes will be further guided by the following conditions:

- (i) The State/UT was asked to complete the child wise data alongwith Aadhar number/unique ID for all students by 31st March, 2017, as releases under fresh non-recurring outlay will be subject to the child wise enrolment data uploaded on UDISE platform.
- (ii) The state administration will give a written commitment for meeting its share of the converged RMSA Scheme of the budget approved according to the prescribed sharing pattern. The budget provision may also be communicated to the Ministry invariably after presentation of the State budget.
- (iii) SMDCs should be constituted in all schools and bank accounts may be opened by them to take care of school grant, civil works, and other such expenditures.
- (iv) The first installment would be released based on provisional Utilization Certificate for 2016-17 and subject to full release of proportionate State share corresponding to GOI share released during the previous financial year.
- (v) The second installment would be released only after (a) the proportionate installment of State/UT share has been released, (b) at least 50% expenditure against available funds has been incurred, (c) utilization certificate has been submitted for funds released in the year 2015-16 and (d) Audit Reports have been submitted for the year 2015-16.

8. The meeting ended with a vote of thanks to the Chair.



Annexure-I

Participants of the Project Approval Board (PAB) meeting held on 17th February, 2017 for approval of Annual Work Plan & Budget 2017-18 of Rajasthan under the Centrally Sponsored Scheme of the Integrated Rashtriya Madhyamik Shiksha Abhiyan (RMSA).

List of participants

1. Shri Maneesh Garg, Joint Secretary, SE.1, MHRD
2. Ms. Nigar F. Husain, Director, RMSA.1, MHRD
3. Ms. Kiran Arora, US, MHRD

Representatives from Rajasthan

1. Shri Naresh Pal Gangwar, Secretary (Education)
State Govt. of Rajasthan
2. Shri Ashfaq Hussain, SPD, RMSA
State Govt. of Rajasthan
3. Shri Kailash Chand Gupta, Dy. Director, RMSA
State Govt. of Rajasthan
4. Shri Girraj Prashad Gupta, Executive Engineer, SE, RCSE, RMSA
State Govt. of Rajasthan
5. Shri Ram Gopal Pareek, CF, RMSA
State Govt. of Rajasthan
6. Shri K. K. Agarwal, AE, RCSE
State Govt. of Rajasthan

Representatives from Other Organization

1. Dr. Kashyapi Awasthi, Asst. Professor, NUEPA, New Delhi



Presentation of Appraisal of AWP&B 2017-18 for the State of Rajasthan

Project Approval Board Meeting
2017 - 18RAJASTHAN

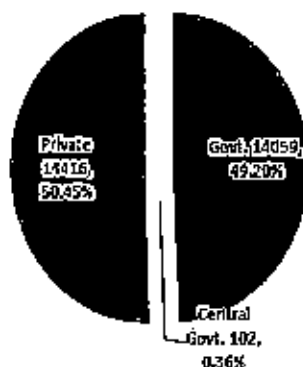
RAJASTHAN at a Glance



Districts: 33
Blocks: 302
EBEs: 186
SFD: 06 (2 SC + 4 ST)

GPI: 0.90
Gender Gap: 13
PTR: 22
SCR: 43

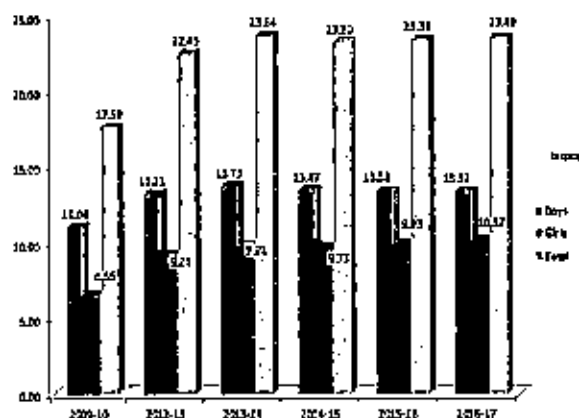
Secondary Schools by Management



Total: 28577

Source: UDSE.

ENROLMENT (SECONDARY LEVEL)

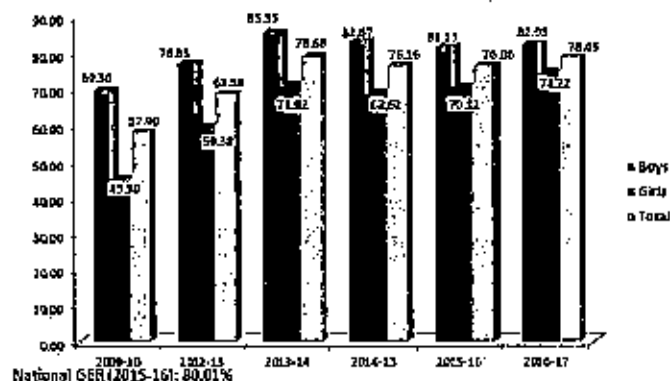


Source: 2009-10 SER & 2013-14 to 2016-17 UDSE.

GROSS ENROLMENT RATIO (SECONDARY LEVEL)

The districts with low GER are Jaisalmer 47.72%, Barmer 55.87% & Jalore 56.04%

Previous Year: Jaisalmer: 37.80%, Barmer: 49.84%, Jalore: 52.01%



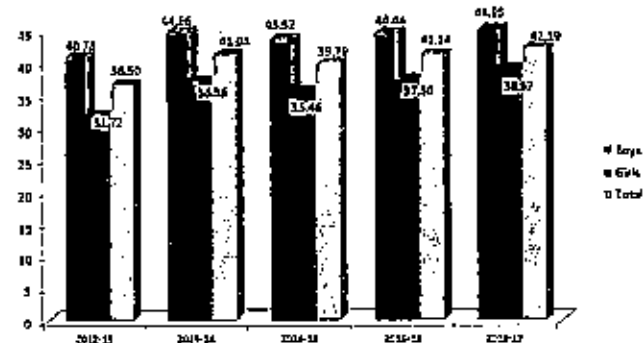
National GER (2015-16): 80.01%

Source: 2009-10 SER & 2012-15 to 2016-17 UDSE.

NET ENROLMENT RATIO (SECONDARY LEVEL)

The districts with low NER are Jaisalmer 19.68%, Barmer 23.43% & Udaipur 29.38%

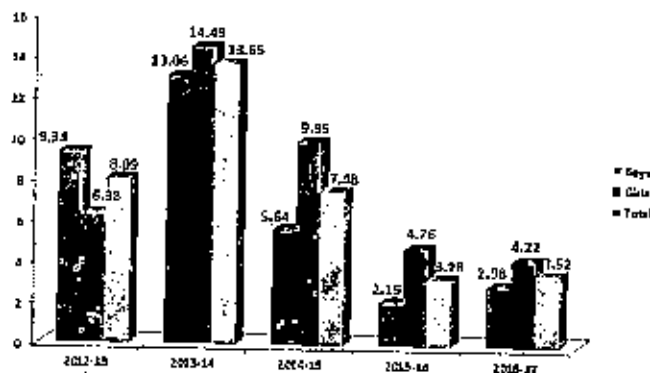
Previous Year: Jaisalmer: 16.99%, Barmer: 21.86%, Udaipur: 29.88%



National NER (2015-16): 51.26%

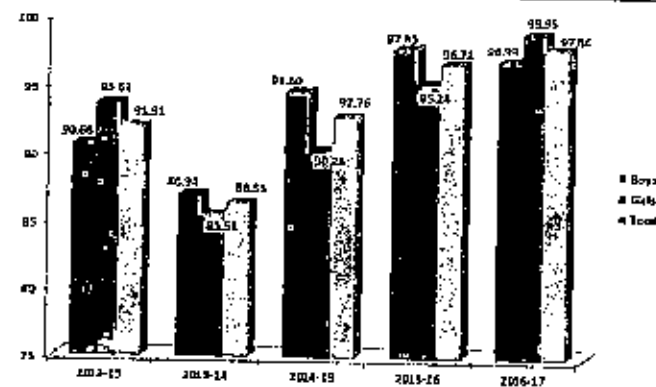
Source: UDSE.

DROPOUT RATE (SECONDARY LEVEL)



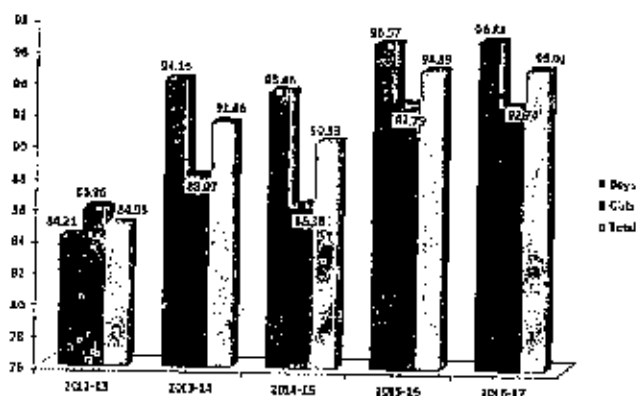
National Dropout rate: 17.08%
Source: UDISE.

RETENTION RATE (SECONDARY LEVEL)



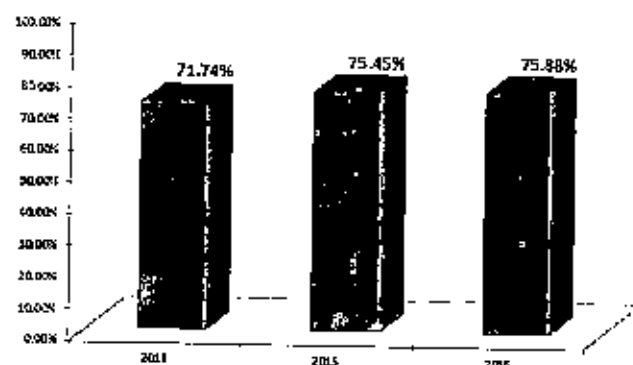
Source: UDISE.

TRANSITION RATE: (CLASS VIII TO IX)



National Transition rate: 90.62%
Source: UDISE.

PASS PERCENTAGE (CLASS X)



National Pass Percentage 79.21
Source: CBSE.

ACCESS

GAR- 83.37%

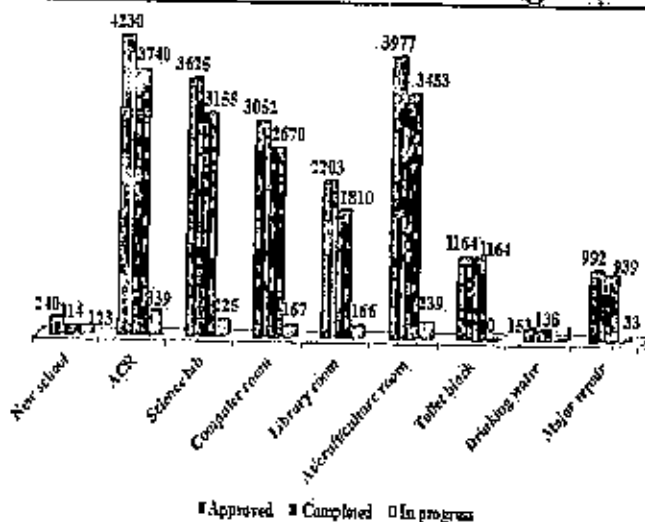
- The state government has completed revised GIS mapping exercise with the help of NIC, Jaipur.
- 10617 % school coordinates have been received.
- States needs to eliminate 6690 schools and provide fresh data of schools coordinates (As per UDISE, 2015-16).

Total requirement - 204



The District: Bikaner (60.05%), Pali (63.04%), Sawai Madhopur (57.74%), Tonk (58.43%) are having low GAR than the state average.

Glimpse of Civil Works Progress



Vacant Posts of Headmasters and Subject Teachers in the Govt. Secondary Schools

	Head Masters			Subject Teachers		
	Approved	Filled	Vacant	Approved	Filled	Vacant
State cadre for Government schools	13527	11059	2468 (18.24%)	56512	51545	4967 (8.78%)
Under RMISA (New Schools)	240	136	104	1200	567*	633

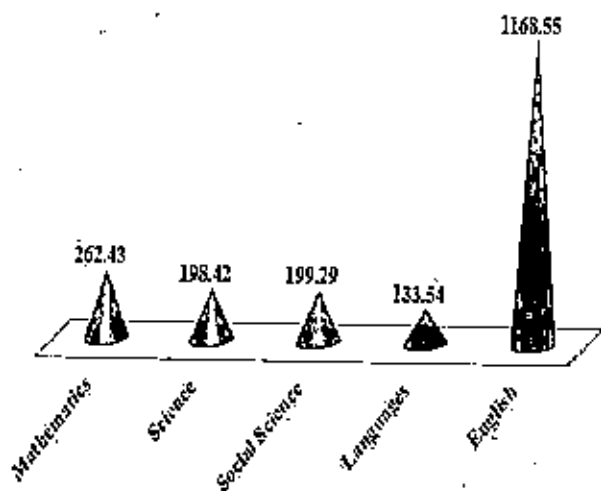
*Teacher teaching core subjects and all subjects considered.

Additional Teachers

- 8098 additional teachers sanctioned in 2011-12.

State Cadre Sanctioned Post	Previous Year	Current Year	Reduction %	Remarks
Teachers	68,789	56512	17.84	Sanctioned post of teachers in the state have reduced by 17.84% from last year because of consolidation and integration of schools.
Additional Teachers	8098	6654	17.84	PAB may consider to reduce the additional teachers post from 8098 to 6654.

Subject Wise PTR



KEY ISSUES

Aadhaar Status			
Population of 5 <18 years	Aadhaar ID	Not having Aadhaar ID	% Pending
2,20,37,606	1,48,95,767	71,41,839	32.4

Aadhaar Status NUEPA		
Total Students	Students with Aadhaar	% Pending
12801045	4396902	65.65

Shaala Siddhi (Self Evaluation)		
Completed	In - Progress	Not Started
3964	782	97756

Electricity Status: 84 schools yet to be electrified.

Aadhaar Status Teacher: Data of 41.74% teachers is pending.

Annexure-III

Costing Sheet of Rajasthan for F.Y. 2017-18					
S. N o	Activity		Approved Outlay		
			Physica l	Unit Cost	Financial
RMSA					
Non - Recurring					
1	New Schools / Upgraded Schools				
	1.1	1 Section School	33	45.84	1512.72
	Total for New Schools / Upgraded Schools				1512.72
2	Strengthening of Existing Schools				
	2.1	Additional Classroom	11	10.05	110.55
	2.2	Art/Craft Room	100	9.55	955.00
	2.5	Lab Equipment (Sci Lab)	97	1	97.00
	2.6	Library Room	94	13.2	1240.80
	2.7	Science Lab	97	10.55	1023.35
	2.8	Toilets for CWSN	141	1.4	197.40
	Total for Strengthening of Existing Schools				3624.10
Total for Non - Recurring					5136.82
Recurring					
1	Annual Grant				
	1.2	School Grant	14056	0.5	7028.00
	Total for Annual Grant				7028.00
2	Staff for Previous Year Schools				
	2.1	Head Masters	136	6.098	829.38
	2.2	Subject Teacher	567	3.9204	2222.867
	Total for Staff for Previous Year Schools				3052.25
3	Additional Staff for Existing Schools				
	3.1	Additional Teachers	6654	3.92	26086.34
	Total for Additional Staff for Existing Schools				26086.3416
4	Community Mobilisation				
	4.1	SMDC Training	1620	0.006	9.72
	Total for Community Mobilisation				9.72
5	Training				
	5.1	In service training of Teachers including HMs in Teaching (ICT , IEDSS, RMSA etc.)	5800	0.03	174.00
	5.3	School Leadership Management Course (Residential)	3000	0.048	144.00
	5.5	Training for Educational officer (DEO's/Principals/Administrators)	50	0.009	0.45
	5.7	Training of Master Trainer	462	0.015	6.93
	5.8	Training of SRGs (SLDP)	250	0.03	7.50
	Total for Training				332.88
6	Quality Components				

	6.1	Continuous professional development for teachers	33	0.043	1.49
	6.2	STEAM Project	95	0.0067	0.645
	6.3	Shaala Siddhi	14056	0.006	84.34
	Total for Quality Components				86.47
7	Project on Science & Maths - (RAA)				
	7.1	Excursion Trip for Students within State	3300	0.002	6.60
	7.2	Exposure visit outside State	250	0.02	5.00
	7.3	In-service Training of Maths & Science Teachers	3000	0.03	90.00
	7.4	Learning Enhancement (Remedial teaching)	137962	0.005	689.81
	7.5	Maths Kit	165	0.011	1.82
	7.6	Science Exhibition / Book Fair	33	1	33.00
	Total for Project on Science & Maths - (RAA)				826.23
8	Project on English				
	8.1	In-service Training for English Teachers	1047	0.009	9.42
	8.2	KRP/RP/ Training	33	0.015	0.50
	Total for Project on English				9.92
9	Project Kala Utsav				
	9.1	Kala Utsav	1	10	10.00
	9.2	TA / DA Allowance for National Level	50	0.02	1.00
	Total for Project Kala Utsav				11.00
10	Project Sports & Tournaments				
	10.1	Sports for Girls	34	0.5147	17.50
	Total for Project Sports & Tournaments				17.50
11	Equity Components				
	11.3	Special Enrolment Drive	3548	0.018	63.86
	Total for Equity Components				63.86
12	Project- Girls Empowerment				
	12.1	Training in Martial Arts to all girls / Self Defence	2100	0.03	63.00
	Total for Project- Girls Empowerment				63.00
13	Project- IT/e-governance				
	13.1	Shaala Darpan	3097	0.06	185.82
	Total for Project- IT/e-governance				185.82
Total for Recurring					37772.99
Total for RMSA					42909.81
ICT					
Recurring					
1	Salary of Computer Teacher				
	1.1	Boot Model (Recurring)	2000	1.07	2140.00
	Total for Salary of Computer Teacher				2140.00
2	Other Recurring Components				
	2.1	Computer, Stationery (Printer Cartridges,	2525	0.5152	1301.01

		CD-ROMs, DVD, paper etc.)		5	
	2.2	Electricity Charges	2525	0.118	297.95
	2.3	Expenses on Diesel/Kerosene for Generator	2525	0.071	179.28
	2.4	Internet / Broad band Charges	2525	0.068	171.70
	2.5	Telephone Charges	2525	0.06	151.50
		Total for Other Recurring Components			2101.43
		Total for Recurring			4241.43
		Total for ICT			4241.43
		IEDSS			
		Recurring			
1		Recurring			
	1.1	Environment Building programme	295	0.1	29.50
	1.2	In-service Training of Special Educators	121	0.03	3.63
	1.3	Orientation of Principals, Educational administrators, parents / guardians etc.	2145	0.003	6.44
	1.5	Salary (Previous Spl. Educators)	121	3.9684	480.18
		Total for Recurring			519.74
2		Student Oriented Activities			
	2.1	Assistive Devices, Equipments and TLM	200	0.009	1.80
	2.2	Books & Stationery (Inc. Braille Books for Blind and Large Print Books for Low Vision)	200	0.065	13.00
	2.3	Escort Allowance	460	0.025	11.50
	2.4	Identification and Assessment (Medical Assessment Camps)	33	0.45	14.85
	2.5	Providing Aids & Appliances	1400	0.06	84.00
	2.6	Reader Allowance	200	0.015	3.00
	2.8	Stipend for Girls	3040	0.02	60.80
	2.9	Transportation allowance	1000	0.0215	21.50
		Total for Student Oriented Activities			210.45
		Total for Recurring			730.19
		Total for IEDSS			730.19
		VE			
		Non - Recurring			
1		Introduction of VE in schools			
	1.1	Tools, Equipment & Furniture	50	7	350.00
		Total for Introduction of VE in schools			350.00
		Total for Non - Recurring			350.00
		Recurring			
1		Recurring support			
	1.2	Assessment and Certification Cost(Prev.)	670	0.815	546.05
	1.3	Cost of providing Hands Training Students(Prev.)	670	0.38	254.60
	1.4	Cost of providing Hands on Skill Training to Students (New)	50	0.375	18.75
	1.5	Flexible Pool for Engaging Resource Person (New)	50	7.25	362.50



	1.6	Flexible Pool for Engaging Resource Persons (prev.)	670	7.25	4857.50
	1.7	Office Expenses / Contingencies for new school(New)	50	1	50.00
	1.8	Office Expenses / Contingencies for new school(Prev.)	670	1	670.00
	1.9	Raw material Grant for new school per course (New)	50	0.7	35.00
	1.1	Raw material grant for new school per course (Prev.)	670	0.7	469.00
	Total for Recurring support				7263.40
2	Teacher Training				
	2.1	In-service Training of Teachers for 1 week (Prev.)	1340	0.03	40.20
	2.2	Induction training of Teachers (4 week)	100	0.11	11.00
	Total for Teacher Training				51.20
	Total for Recurring				7314.60
	Total for VE				7664.60
	GH				
	Recurring				
1	Recurring				
	1.1	Asstt. Cook (Two)	372	0.3	111.60
	1.2	Chowkidar	186	0.36	66.96
	1.3	Electricity / Water per year	186	0.6	111.60
	1.4	Fooding/lodging expenditure for Girl Child	12451	0.15	1867.65
	1.5	Head Cook (One)	186	0.36	66.96
	1.6	Honorarium of Warden (in addition to her salary teacher)	186	0.6	111.60
	1.7	Maintenance per year	186	0.4	74.40
	1.8	Medical care	12451	0.0075	93.38
	1.9	Miscellaneous	186	0.4	74.40
	1.1	Newspaper / Magazines	186	0.2	37.20
	1.1	Toiletries and sanitation	12451	0.01	124.51
	Total for Recurring				2740.26
	Total for Recurring				2740.26
	Total for GH				2740.26
	MMER (Intg. RMSA)			1	2040.0
				2	2040.02
	Grand Total				60326.31

Annexure IV

S. No.	district	Name of the school	UDISE CODE	Remarks
1	Alwar	GOVT. UPS Jakhopur	08060608901	Building except Computer room and 1 Classroom
2	Alwar	GOVT. UPS Sahodi	08060801001	Building except Computer room and Classroom
3	Banswara	G.U.P.S. Jhalo Ka Gada	08280406301	Building except Computer room and Classroom
4	Banswara	G.U.P.S. ODA -A	08280905701	Building except Computer room and Classroom
5	Banswara	G.U.P.S. Navakheda	08281011201	Building except Computer room and Classroom
6	Banswara	GUPS Balai	08170101001	Building except Computer room and Classroom
7	Barmer	Gupsarniyali Girls	08170500902	Building except Computer room and Classroom
8	Barmer	Gups Lohidi	08170530903	Building except Computer room and Classroom
9	Barmer	Gups Nehro Ka Bera (1)	08171201801	Building except Computer room and Classroom
10	Barmer	Gups Bhalro Ka Bara	08171605901	Building except Computer room and Classroom
11	Barmer	Gups Genaniyon Ka Tala	08170817301	Building except Computer room and Classroom
12	Barmer	Gups Chila Nadi, Kanod	08171113701	Building except (Computer room and 1 Classroom)
13	Bikaner	G.U.P.S., Pemasar	08030109901	Building except Computer room and Classroom
14	Bikaner	G.U.P.S. Sherpura Kharbara	08030202501	Building except Computer room and Classroom
15	Bikaner	G.U.P.S. Fooldesar	08030205201	Building except Computer room and Classroom
16	Bikaner	G.U.P.S. Siyasar Panchkosa	08030600101	Building except (Computer room and 1 Classroom)
17	Bundi	GOVT. UPS Talabgaon	08230108601	Building except Computer room and Classroom
18	Dholpur	GOVT. Upsfirojpur	08080305801	Building except Computer room and Classroom
19	Dungarpur	G.S.K.U.P.S. Mana Talaie	08270100901	Building except Computer room and Classroom
20	Dungarpur	G.U.P.S. Ramsagra	08270101101	Building except (Computer room and 1 Classroom)
21	Dungarpur	G.U.P.S. Atarsounba	08270103501	Building except Computer room and Classroom
22	Dungarpur	G.U.P.S. Lambabhatra	08270119201	Building except Computer room and Classroom
23	Ganganagar	Govt. UPS. 2 STR	08010633003	Building except Computer room and Classroom
24	Jaipur	Govt UPS Boyathawala	08120902201	Building except Computer room and Classroom
25	Jaisalmer	Govt. Uttar Pradesh 10 BD Jawahar Nagar	08160105806	Building except Computer room and Classroom
26	Jaisalmer	Govt. UPS Subhash Nagar	08160207603	Building except Computer room and Classroom
27	Jodhpur	Gups Undeda Ki Dhani	08150704401	Building except Computer room and Classroom
28	Jodhpur	Gups Bambor Darjiyan	08150705301	Building except Computer room and Classroom
29	Jodhpur	Gups Siyoloki Dhani	08151106109	Building except Computer room and Classroom
30	Jodhpur	Gups Devaniya	08151600402	Building except Computer room and Classroom
31	Karauli	Gups Gari Ka Gaon	08090600229	Building except Computer room and Classroom
32	Udaipur	G.U.P.S.S.K.S. Uttri Ambavi	08261307202	Building except (Computer room and 1 Classroom)
33	Udaipur	G.G.U.P.S. Kholdi	08261502101	Building except Computer room and Classroom

Annexure-V

List of Schools approved under Strengthening of existing schools under RMSA

Sl. No.	District	Block	School Code	School	Science Lab Reqd (No.)	Computer Room Reqd (No.)	Art Room Reqd (No.)	Library Room Reqd (No.)	Additional Classroom Reqd (No.)
1	BANSWARA	BAGIDORA	08280606404	GOVT. S.S.S. RAKHO	1	0	1	1	0
2	BANSWARA	BANSWARA	08281001003	GOVT. SIN. SEC. SCHOOL BADVI	1	0	1	1	0
3	BANSWARA	BANSWARA	08281019105	GOVT. SIN. SEC. SCHOOL SAMARIYA	1	0	1	1	0
4	BANSWARA	CHOTISARVAN	08280212001	GOVT. SIN. SEC. CHHAYANBADI	1	0	1	1	0
5	BANSWARA	GARHI	08280400608	GOVT. SEN. SEC. SCHOOL METVALA	1	0	1	0	0
6	BANSWARA	GARHI	08280416304	GOVT. SEN. SEC. SCHOOL PANASI CHHOTI	1	0	1	1	0
7	BANSWARA	GARHI	08280415611	GOVT. SEN. SEC. SCHOOL AMJA	1	0	1	1	0
8	BANSWARA	GHATOL	08280107301	GOVT. SIN. SEC. SCHOOL MOTAGAVA	1	0	1	1	1
9	BANSWARA	GHATOL	08280106908	GOVT. SIN. SEC. BHOYAR	1	0	1	0	0
10	BANSWARA	KUSHALGARH	08280806503	GOVT. SIN. SEC. BADVAS KALAN	1	0	1	1	0
11	BANSWARA	TALWARA	08280306408	GOVT. SIN. SEC. SCHOOL SURPUR	0	0	1	1	1
12	BANSWARA	TALWARA	08280300204	GOVT. SIN. SEC. SCHOOL KUSHALPURA	1	0	1	1	0
13	BANSWARA	TALWARA	08280304311	GOVT. SIN. SEC. SCHOOL TEJPUR	1	0	1	1	0
14	DUNGARPUR	BICCHIWARA	08270105301	G.S. SEC. S. CHUNDAWARA	0	0	1	0	0
15	DUNGARPUR	BICCHIWARA	08270103216	G. SEC. S. SHISHOD	1	0	1	1	0
16	DUNGARPUR	DOVDA	08270704108	G. SER. SEC. S. HIRATA	1	0	1	1	0

17	DUNGARPUR	DOVDA	08270705308	G.SR.SEC. LOLAKPUR	1	0	1	1	0
18	DUNGARPUR	DOVDA	08270709409	G.SEC.S. MANDVA KHAPARDA	1	0	1	1	0
19	DUNGARPUR	DUNGARPUR	08270209306	G.SR.SEC. MAITALI	1	0	1	1	0
20	DUNGARPUR	DUNGARPUR	08270207704	A.G.SR.S. GADAMORAIYA	1	0	1	1	0
21	DUNGARPUR	DUNGARPUR	08270208105	G.SR.SEC. PIPLADA	1	0	1	1	0
22	DUNGARPUR	GALIYAKOT	08270804109	G.SR.SEC.S.JHOSAVA	1	0	1	1	0
23	NAGAU	DEEDWANA	08140710804	GHSS LALASARI	1	0	1	0	0
24	NAGAU	DEGANA	08140106001	GSS GUNDISAR	1	0	1	1	0
25	NAGAU	DEGANA	08140100701	GSS BHCHHWARI	1	0	1	1	1
26	NAGAU	DEGANA	08140111601	GHSS NIMBARI KALAN	0	0	1	0	0
27	NAGAU	DEGANA	08140111703	GHSS NIMOLA KALAN	1	0	1	1	0
28	NAGAU	LADNUN	08140607707	GSS REENGAN	1	0	1	1	0
29	NAGAU	LADNUN	08140608505	GHSS SONWA	1	0	1	1	0
30	NAGAU	LADNUN	08140609603	GHSS UDRASAR	1	0	1	1	0
31	NAGAU	MOLASAR	08141306903	GSS PHOGARI	1	0	1	1	0
32	NAGAU	MOLASAR	08141301404	GHSS BERWA	1	0	1	1	0
33	NAGAU	MOLASAR	08141306707	GHSS PEEDWA	1	0	1	1	0
34	BANSWARA	ARTHUNA	08280903905	GOVT. SEN. SEC.SCHOOL KESARPURA	1	0	1	1	0
35	BANSWARA	BANSWARA	08281002003	GOVT. SIN. SEC.SCHOOL BARVALA RAJIYA	1	0	1	1	0
36	BANSWARA	BANSWARA	08281004902	GOVT. SIN. SEC. SCHOOL DAVGARH	1	0	1	1	0
37	BANSWARA	CHOTISARVAN	08280214012	GOVT. SIN.SEC.SCH.FEFAR	1	0	1	1	0
38	BANSWARA	CHOTISARVAN	08280216706	GOVT. SIN.SEC.S. DHANAKSHRI	1	0	1	1	0
39	BANSWARA	GANGADTALAI	08281102505	GOVT. S. S. S. DHALAR	1	0	1	1	0
40	BANSWARA	GANGADTALAI	08281108501	GOVT. S. S. S. SENDNANI	1	0	1	1	0
41	BANSWARA	GHATOL	08280101701	GOVT.SEC. KADUA AMARI	1	0	1	1	0
42	BANSWARA	GHATOL	08280108503	GOVT. SIN. SECS. AMARSINGH KA GHADA	1	0	1	1	0
43	BANSWARA	GHATOL	08280106006	GOVT. SIN. SECS.MUNGANA	1	0	1	1	1

44	BANSWARA	GHATOL	08280114004	GOVT. SIN. SEC RUPJI KA KHEDA	1	0	1	1	0
45	BANSWARA	GHATOL	08280121407	GOVT. SIN. SEC. PADLA	1	0	1	1	0
46	BANSWARA	GHATOL	08280121806	GOVT. SIN. SECS. SAVANIYA	1	0	1	1	1
47	BANSWARA	KUSHALGARH	08280807702	GOVT. SIN. SEC.SCHOOL JHKLI	1	0	1	1	0
48	BANSWARA	KUSHALGARH	08280809705	GOVT. SIN.SEC.SCHOOL SARAN	1	0	1	1	0
49	BANSWARA	KUSHALGARH	08280818703	GOVT. SIN. SEC. MUNDRI	1	0	1	1	0
50	BANSWARA	SAJANGARH	08280712904	GOVT. SR. SECONDARY SCHOOL GODAVADA NARENG	1	0	1	1	0
51	BANSWARA	TALWARA	08280307805	GOVT. SIN. SEC. SCHOOL SAGROD	1	0	1	1	0
52	BANSWARA	TALWARA	08280305501	GOVT. SIN. SEC.SCHOOL MAKOD	1	0	1	1	1
53	DUNGARPUR	BICCHIWARA	08270107308	G.S.SEC.S.MODAR	1	0	1	1	0
54	DUNGARPUR	BICCHIWARA	08270111307	G.SEC.S.VEEPUR	1	0	1	1	1
55	DUNGARPUR	CHIKHALI	08270600908	G.SR.SEC.S.MALAKHOLRA	1	0	1	1	0
56	DUNGARPUR	CHIKHALI	08270604104	G.SR.SEC.S. GUNDLARA	1	0	1	1	0
57	DUNGARPUR	GALIYAKOT	08270805803	G.SR.SEC.S.BABA KI BAR	1	0	1	1	0
58	DUNGARPUR	JHONTEARI	08270904008	G.SR.SEC.S. BHINDA	1	0	1	1	0
59	BANSWARA	ARTHUNA	08280904804	GOVT. SEN. SEC. SCHOOL MALANA	1	0	1	1	0
60	BANSWARA	BANSWARA	08281004105	GOVT. SIN. SEC.SCHOOL CHAPARYA	1	0	1	1	0
61	BANSWARA	BANSWARA	08281007102	GOVT. SIN. SEC.SCHOOL KADELIYA	1	0	1	1	0
62	BANSWARA	BANSWARA	08281020603	GOVT. SIN. SEC.SCHOOL UPLA GANTALA	1	0	1	1	0
63	BANSWARA	GANGADTALAI	08281107405	GOVT. S. S. S. RAM KA MUNNA	1	0	1	1	0
64	BANSWARA	GARHI	08280403905	GOVT. SEN. SEC. SCHOOL	1	0	1	1	0

				SAREDI CHHOTI					
65	BANSWARA	GHATOL	08280111613	GOVT. SIN. SECS. VADGUN	1	0	1	1	0
66	BANSWARA	GHATOL	08280101304	GOVT. SIN. SEC. CHADLA	1	0	1	1	1
67	BANSWARA	KUSHALGARH	08280801607	GOVT. SIN. SEC. POTLIYA	1	0	1	1	0
68	BANSWARA	KUSHALGARH	08280809305	GOVT. SIN. SEC. SCHOOL CHARKNI	1	0	1	1	0
69	BANSWARA	KUSHALGARH	08280811101	GOVT. SIN. SEC. SCHOOL KOTDA	1	0	1	1	0
70	BANSWARA	SAJJANGARH	08280710903	GOVT. SR. SECONDARY SCHOOL MANGLESHWAR	1	0	1	1	0
71	BANSWARA	TALWARA	08280308402	GOVT. SEC. SCHOOL MALVASA - I	1	0	1	1	0
72	BANSWARA	TALWARA	08280300605	GOVT. SIN. SEC. SCHOOL MASOTIYA	1	0	1	1	1
73	BANSWARA	TALWARA	08280307305	GOVT. SIN. SEC. SCHOOL BORVAT	1	0	1	1	0
74	DUNGARPUR	ASPUR	08270300213	G. SR. SEC. SCH. KHERA ASPUR	1	0	1	1	0
75	DUNGARPUR	ASPUR	08270300408	G. SEC. S. GOL	1	0	1	1	0
76	DUNGARPUR	DOVDA	08270700106	G. SR. SEC. S. AASHLA	1	0	1	1	0
77	DUNGARPUR	DUNGARPUR	08270209211	G. SR. SEC. S. MATHU GAMRA PAL	1	0	1	1	0
78	DUNGARPUR	DUNGARPUR	08270220612	G. SR. SEC. S. BALWARA	1	0	1	1	0
79	DUNGARPUR	DUNGARPUR	08270224107	G. SR. SEC. S. SATI RAMPURA	1	0	1	1	0
80	DUNGARPUR	GALIYAKOT	08270801408	A. G. SR. SEC. S. DEYANA	1	0	1	1	0
81	DUNGARPUR	JHONTHARI	08270904902	G. G. SEC. S. JHIAONTHARI	1	0	1	1	0
82	DUNGARPUR	JHONTHARI	08270903601	G. SEC. S. VENJA	1	0	1	1	0
83	DUNGARPUR	SABLA	08271002410	G. SR. SEC. S. GAMDI	1	0	1	1	0
84	DUNGARPUR	SABLA	08271004405	G. SR. SEC. S. MYALA-A	1	0	1	1	0
85	DUNGARPUR	SABLA	08271005105	G. SEC. S. ODA	1	0	1	1	1
86	DUNGARPUR	SABLA	08271005509	G. SR. SEC. S. PAL NITHAUVA	1	0	1	1	1
87	ALWAR	RAJGARH	08061112801	GOVT. ADRASH SHSS BHJEDA	1	0	1	1	0

88	DUNGARPUR	SAGWARA	08270400106	A.G.SR.SEC.S.KARIYANA	1	0	1	1	0
89	DUNGARPUR	SAGWARA	08270409011	G.SR.SEC.S.GOWARI	1	0	1	0	0
90	DUNGARPUR	SAGWARA	08270412205	G.SR.SEC.S.VARSINGPUR	1	0	1	1	0
91	DUNGARPUR	SAGWARA	08270419304	G.SR.SEC.S.VAGERI	1	0	1	1	0
92	DUNGARPUR	SIMALWARA	08270512605	G.G.SEC.S.PEETH	1	0	1	1	0
93	DUNGARPUR	SIMALWARA	08270510504	G.SEC.S.SAKARSI	1	0	1	1	0
94	DUNGARPUR	SIMALWARA	08270511712	G.SR.SEC.S.GHUVAD	1	0	1	1	0
95	DUNGARPUR	SIMALWARA	08270513305	G.SR.SEC.S. JHALAIE	1	0	1	1	0
96	BANSWARA	GARHI	08280419801	GOVT SEC.SCHOOL DAKAR KUNDI	1	0	1	1	0
97	BANSWARA	GARHI	08280407402	GOVT. SEN. SEC.SCHOOL SAKARIYA	1	0	1	1	0
98	DUNGARPUR	DOVDA	08270701305	G.SR.SEC.S. BIJOJATO KA ODA	1	0	1	1	0
99	DUNGARPUR	GALIYAKOT	08270806606	G.SR.SEC.S.GADA MEDTIYA	1	0	1	1	0
100	DUNGARPUR	SABLA	08271006208	G. SR. SEC.S .SAGOT	1	0	1	1	0
					97	0	100	94	11

Annexure – VI

S. No.	Name of District	Name of Schools	UDISE Code	Trade1	Job Role	Trade2	Job Role
1	AJMER	G.HIGHER S.SCHOOL, JAWAJA	8210510104	IT/Ites	Domestic Data Entry Operator	Retail	Cashier
2	AJMER	G.SR.SEC.SCH. KHARWA MASUDA	8210612901	IT/Ites	Domestic Data Entry Operator	Tourism & Hospitality	Meet & Greet Officer
3	AJMER	G.HR.SEC.SCH. BADLI	8210700301	Health Care	General Duty Assistant	Beauty wellness	Assistant Beauty Therapist
4	ALWAR	GOVT. SENIOR SECONDARY SCHOOL TAPUKARA BLOCK TIJARA, ALWAR	8060601704	IT/Ites	Domestic Data Entry Operator	Retail	Cashier
5	ALWAR	GOVT. SENIOR SECONDARY SCHOOL JHTWANA BLOCK TIJARA, ALWAR	8060603302	IT/Ites	Domestic Data Entry Operator	Retail	Cashier
6	ALWAR	GOVT. SENIOR SECONDARY SCHOOL MUBARIKPUR, BLOCK-RAMGARH, ALWAR	8060712601	IT/Ites	Domestic Data Entry Operator	Beauty wellness	Assistant Beauty Therapist
7	ALWAR	GOVT. SENIOR SECONDARY SCHOOL ALAWADA, BLOCK RAMGARH, ALWAR	8060700101	Health Care	General Duty Assistant	Retail	Cashier
8	BANSWARA	G.S.S.S. NARVALI	8280116501	IT/Ites	Domestic Data Entry Operator	Health Care	General Duty Assistant
9	BANSWARA	G.S.S.S. TAMBESARA	8280715607	Tourism & Hospitality	Meet & Greet Officer	Health Care	General Duty Assistant
10	BARAN	G.SR.SEC.S. SCHOOL CHHABRA	8310424503	IT/Ites	Domestic Data Entry Operator	Health Care	General Duty Assistant
11	BARAN	G.SR.SEC.SCH. BHANSTHUNI	8310609901	IT/Ites	Domestic Data Entry Operator	Health Care	General Duty Assistant

12	BHARATPUR	GOVT. SR.SEC.SCHOOL, GOPINATH, KAMAN	8070126201	Health Care	General Duty Assistant	Beauty wellness	Assistant Beauty Therapist
13	BHARATPUR	GOVT. ADARSH SR. SEC. SCHOOL, AWAR	8070401308	IT/Ites	Domestic Data Entry Operator	Retail	Cashier
14	BHILWARA	GOVT. GIRLS. HR.SEC. SCHOOL HAMIRGARH	8240811308	IT/Ites	Domestic Data Entry Operator	Health Care	General Duty Assistant
15	BIHLWARA	GOVT. HR.SEC. SCHOOL NANDRAI	8240907816	IT/Ites	Domestic Data Entry Operator	Health Care	General Duty Assistant
16	BIKANER	G.SR.SEC.SCHOOL NAPASAR	8030107801	IT/Ites	Domestic Data Entry Operator	Health Care	General Duty Assistant
17	BIKANER	G.SR.SEC.SCHOOL GIRLS, LUNKARANSAR	8030215137	IT/Ites	Domestic Data Entry Operator	Beauty wellness	Assistant Beauty Therapist
18	BUNDI	GOVT. SEN. SEC. SCHOOL JAIPUR	8230306601	IT/Ites	Domestic Data Entry Operator	Health Care	General Duty Assistant
19	BUNDI	GOVT. SR. SEC BALIKA TALERA	8230405612	IT/Ites	Domestic Data Entry Operator	Health Care	General Duty Assistant
20	CHITTAURG ARH	GOVT.SR.SEC SCH.GHOSUNDA	8290518409	Health Care	General Duty Assistant	Beauty wellness	Assistant Beauty Therapist
21	CHITTAURG ARH	GOVT. SR.SEC.SCHOOL JAWADA-2	8291009401	IT/Ites	Domestic Data Entry Operator	Health Care	General Duty Assistant
22	DAUSA	GOVT SR SEC SCHOOL KUNDAL	8110220911	Health Care	General Duty Assistant	Beauty wellness	Assistant Beauty Therapist
23	DHAULPUR	GOVT. SR. SEC. SCHOOL KHERLI	8080417508	Tourism & Hospitality	Meet & Greet Officer	Health Care	General Duty Assistant
24	DHAULPUR	GOVT. SR. SEC. SCHOOL BASAI NAWAB	8080506114	IT/Ites	Domestic Data Entry Operator	Beauty wellness	Assistant Beauty Therapist
25	DUNGARPUR	ADARSH G.S.SEC.S.JHINJHVA	8270102906	IT/Ites	Domestic Data Entry Operator	Health Care	General Duty Assistant
26	DUNGARPUR	AADARSH G.SR.SEC.SCH. DUNGAR SARAN	8270602204	Health Care	General Duty Assistant	Beauty wellness	Assistant Beauty Therapist
27	HANUMANG ARH	GSSS PHEPHANA 1KNN	8020200420	IT/Ites	Domestic Data Entry Operator	Health Care	General Duty Assistant

28	HANUMANG ARH	GSSS BADOPAL BARANI	8020525513	IT/Ites	Domestic Data Entry Operator	Health Care	General Duty Assistant
29	JAIPUR	GOVT G.SR.SEC.SCH BASSI	8120821513	Health Care	General Duty Assistant	Beauty wellness	Assistant Beauty Therapist
30	JAIPUR	GOVT MAHARAJA GIRLS SR.SEC. SCHOOL	8122607412	Health Care	General Duty Assistant	Beauty wellness	Assistant Beauty Therapist
31	JALORE	AADRASH GOVT. SR. SEC. SCHOOL BAGODA	8180405914	IT/Ites	Domestic Data Entry Operator	Health Care	General Duty Assistant
32	JHALAWAR	GOVERNMENT ADARSH SENIOR SECONDARY SCHOOL RAIPUR	8320503518	IT/Ites	Domestic Data Entry Operator	Retail	Cashier
33	JHALAWAR	GASSS BHALTA	8320715309	Beauty wellness	Assistant Beauty Therapist	Health Care	General Duty Assistant
34	JHUNJHUNU	GSSS CHHAPOLI	8050806309	IT/Ites	Domestic Data Entry Operator	Health Care	General Duty Assistant
35	JODHPUR	GOVT. SENIOR SECONDARY SCHOOL, NEVRA ROAD	8150506601	Beauty wellness	Assistant Beauty Therapist	Health Care	General Duty Assistant
36	KARALI	GOVT. SENIOR SECONDARY SCHOOL, SIKRODA MEENA	8090216702	Health Care	General Duty Assistant	Beauty wellness	Assistant Beauty Therapist
37	NAGPUR	GHSS PARBATSAR	8140412211	Health Care	General Duty Assistant	IT/Ites	Domestic Data Entry Operator
38	NAGPUR	GHSS KHUNKHUNA	8140709610	Health Care	General Duty Assistant	IT/Ites	Domestic Data Entry Operator
39	PALI	GHSS BERA	8200904701	IT/Ites	Domestic Data Entry Operator	Tourism & Hospitality	Meet & Greet Officer
40	PALI	GHSS GHANERAO	8201002707	IT/Ites	Domestic Data Entry Operator	Retail	Cashier
41	PRATAPGARH (RAJ.)	GOVT.HR.SEC.SCH. AVALESHWER	8331311702	IT/Ites	Domestic Data Entry Operator	Health Care	General Duty Assistant
42	PRATAPGARH (RAJ.)	GOVT.HR.SEC.SCH. PRATAPGARH	8331371763	Health Care	General Duty Assistant	Tourism & Hospitality	Meet & Greet Officer

43	RAJSAMAND	GOVT. GIRLS SR. SEC. SCH. DEOGARH	8250213803	IT/Ites	Domestic Data Entry Operator	Beauty wellness	Assistant Beauty Therapist
44	RAJSAMAND	GOVT AADARSH SR. SEC. SCH. EMDI	8250613111	Health Care	General Duty Assistant	Beauty wellness	Assistant Beauty Therapist
45	SAWAI MADHOPUR	G.SR. SEC.SCHOOL SAWAI MADHOPUR	8100519704	Health Care	General Duty Assistant	Tourism & Hospitality	Meet & Greet Officer
46	Sikar	G.SR. SEC.SCHOOL AJITGARH	8130805010	IT/Ites	Domestic Data Entry Operator	Retail	Cashier
47	SIROHI	ADARSH G.S.SEC.S.REODAR	8190512814	IT/Ites	Domestic Data Entry Operator	Retail	Cashier
48	TONK	GOVT. SR. SEC. SCH. JHILAY	8220308608	IT/Ites	Domestic Data Entry Operator	Tourism & Hospitality	Meet & Greet Officer
49	UDAIPUR	SHRI KESHRIYAJI G.S.SEC.S. RISHABHDEO	8261200217	IT/Ites	Domestic Data Entry Operator	Beauty wellness	Assistant Beauty Therapist
50	UDAIPUR	G.SR.SEC.S.BICHIWADA	8261302101	IT/Ites	Domestic Data Entry Operator	Beauty wellness	Assistant Beauty Therapist

School wise list approved under Vocational Education